

Concrete for footings & shafts
Piers 3 & 4 to 3000 psi
Pier 5 to 4000 psi

AS BUILT

COLTON CUT-OFF

SOUTHERN PACIFIC COMPANY
PACIFIC LINES

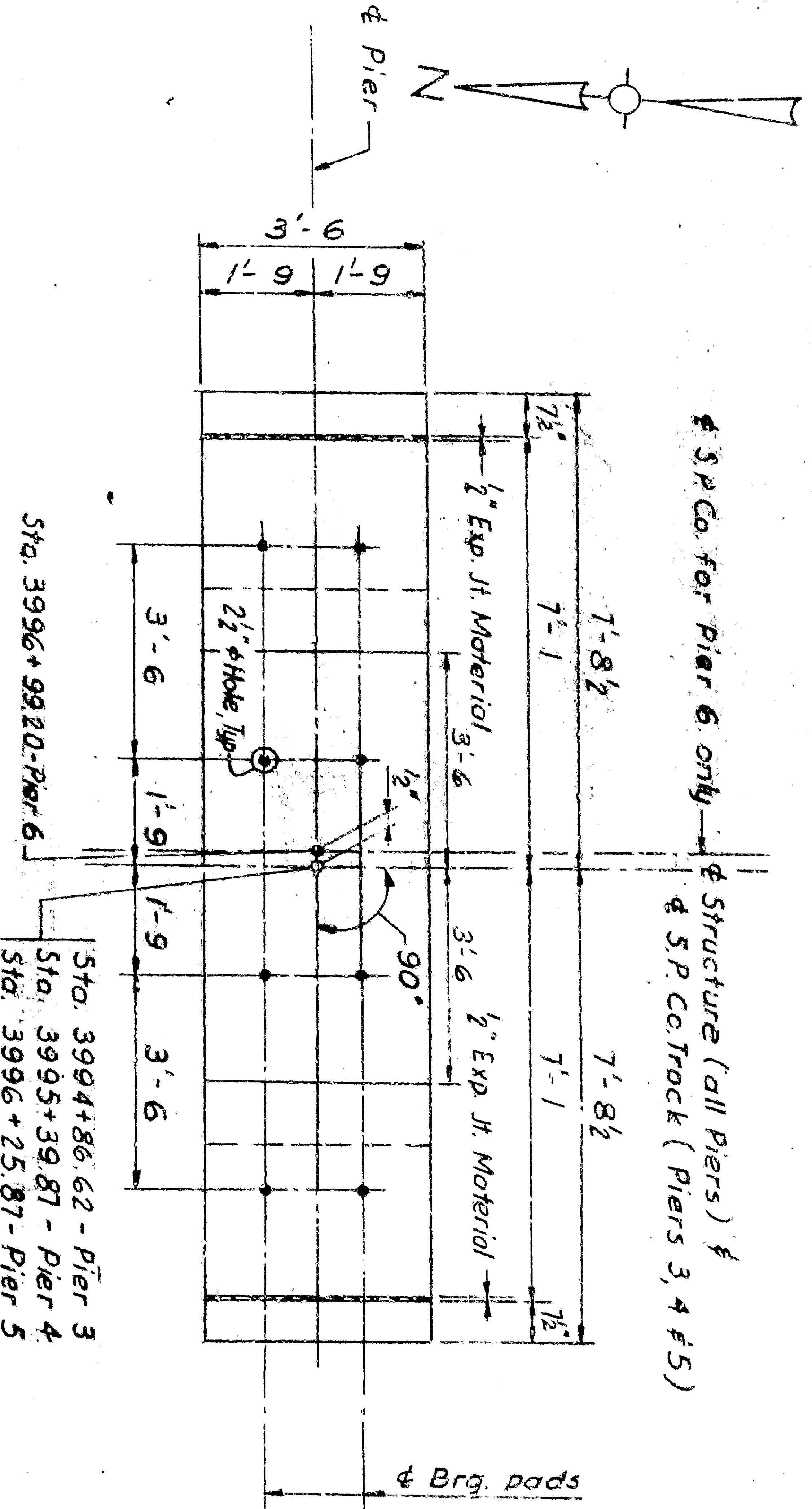
CITY OF SAN BERNARDINO
ARROW ROUTE-RIALTO AVE UNDERPASS
BRIDGE M.P. 4500
PIERS 3, 4, 5 AND 6

DESIGNED BY: W. Lipph
DRAWN BY: R.D. Lee
CHECKED BY: H.B. Topp
APPROVED BY: S.A. Lewis

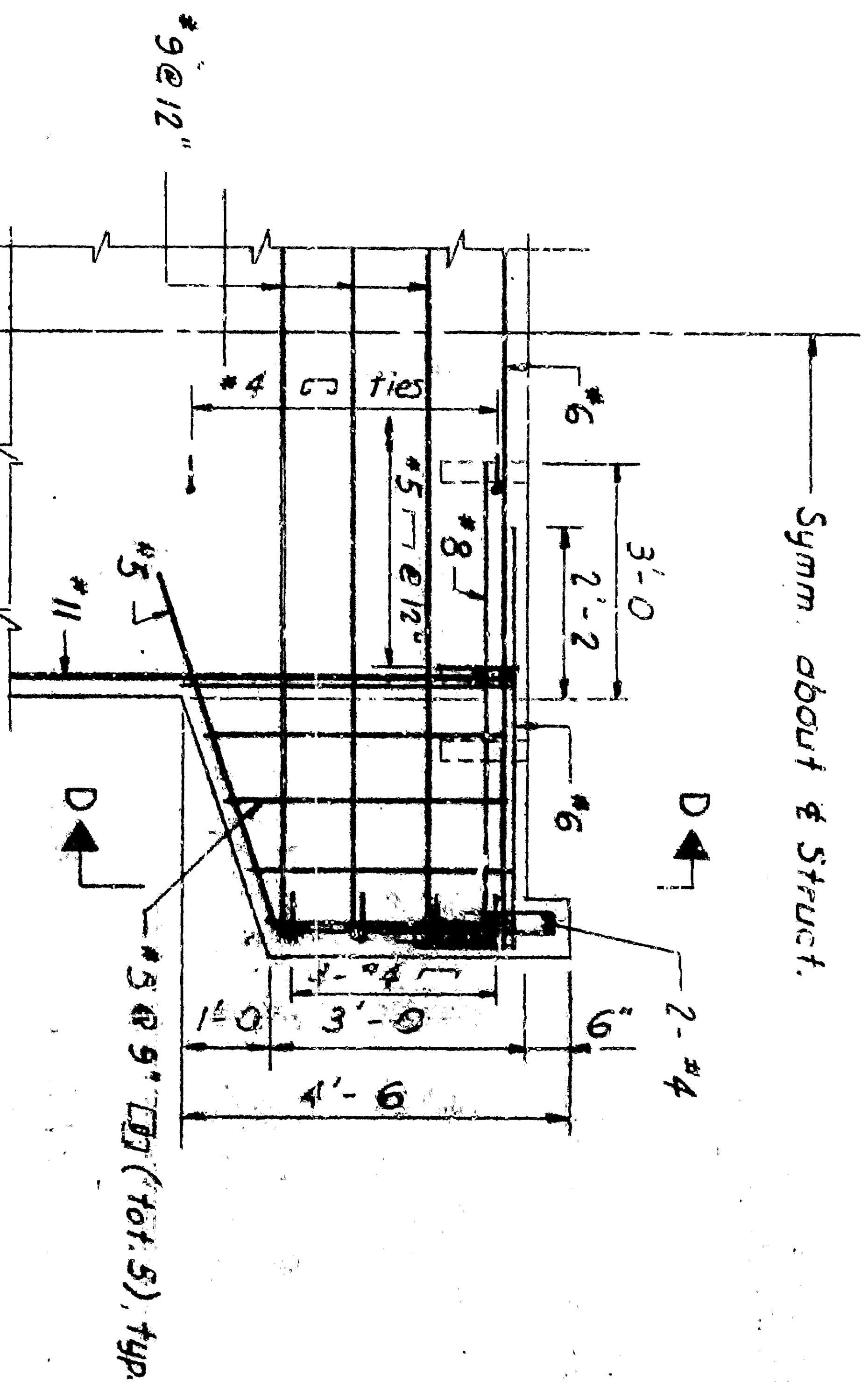
1	Original Design	1/27/48
2	Revised Pier Elevations	1/27/48
3	As Built	1/27/48

DELEW, CATHERS & COMPANY
SAN FRANCISCO, CALIFORNIA

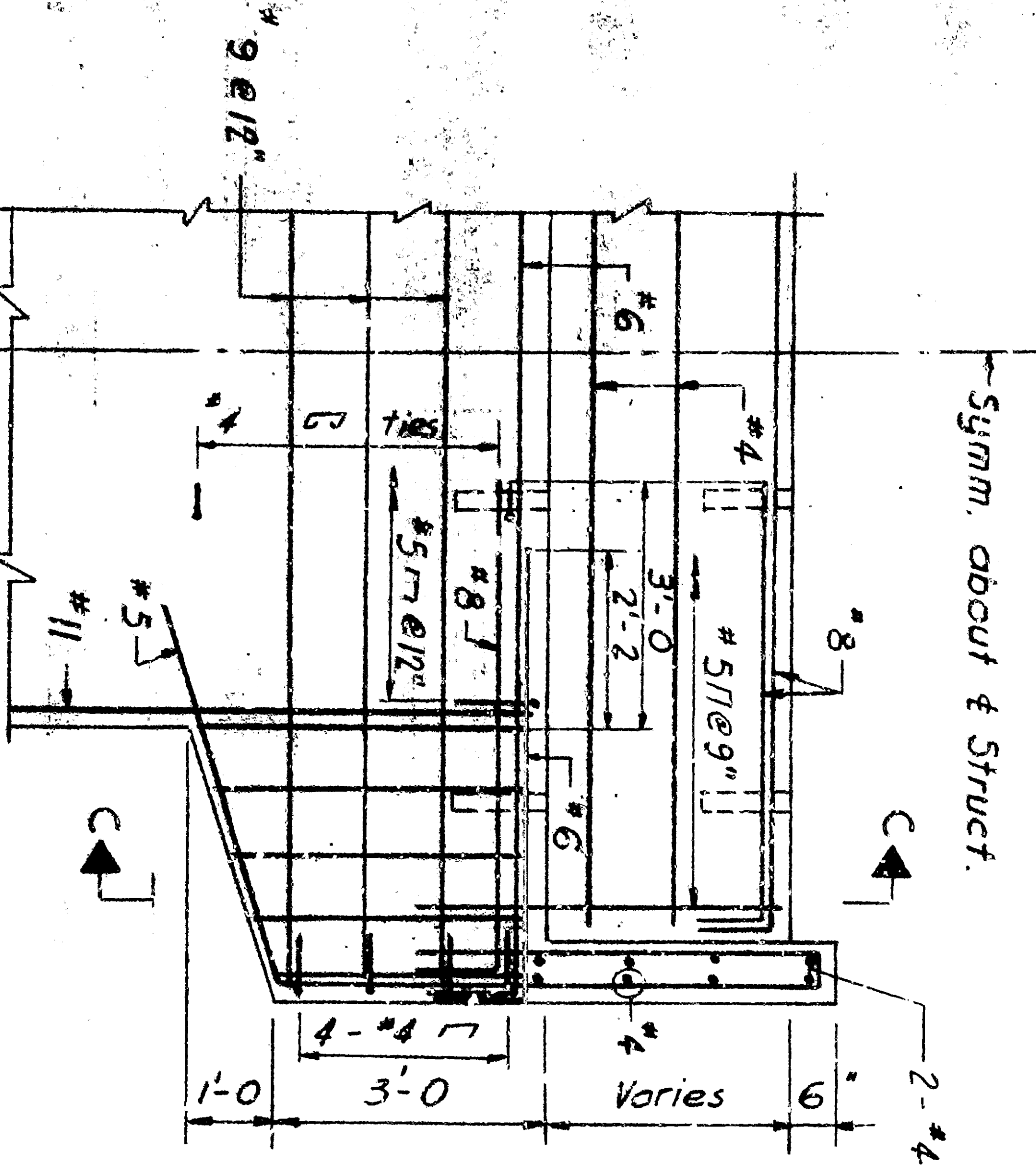
Sheet No. AR-7
Scale: 1/4" = 1'-0" & 4x notes
Date: December, 1905



PLAN

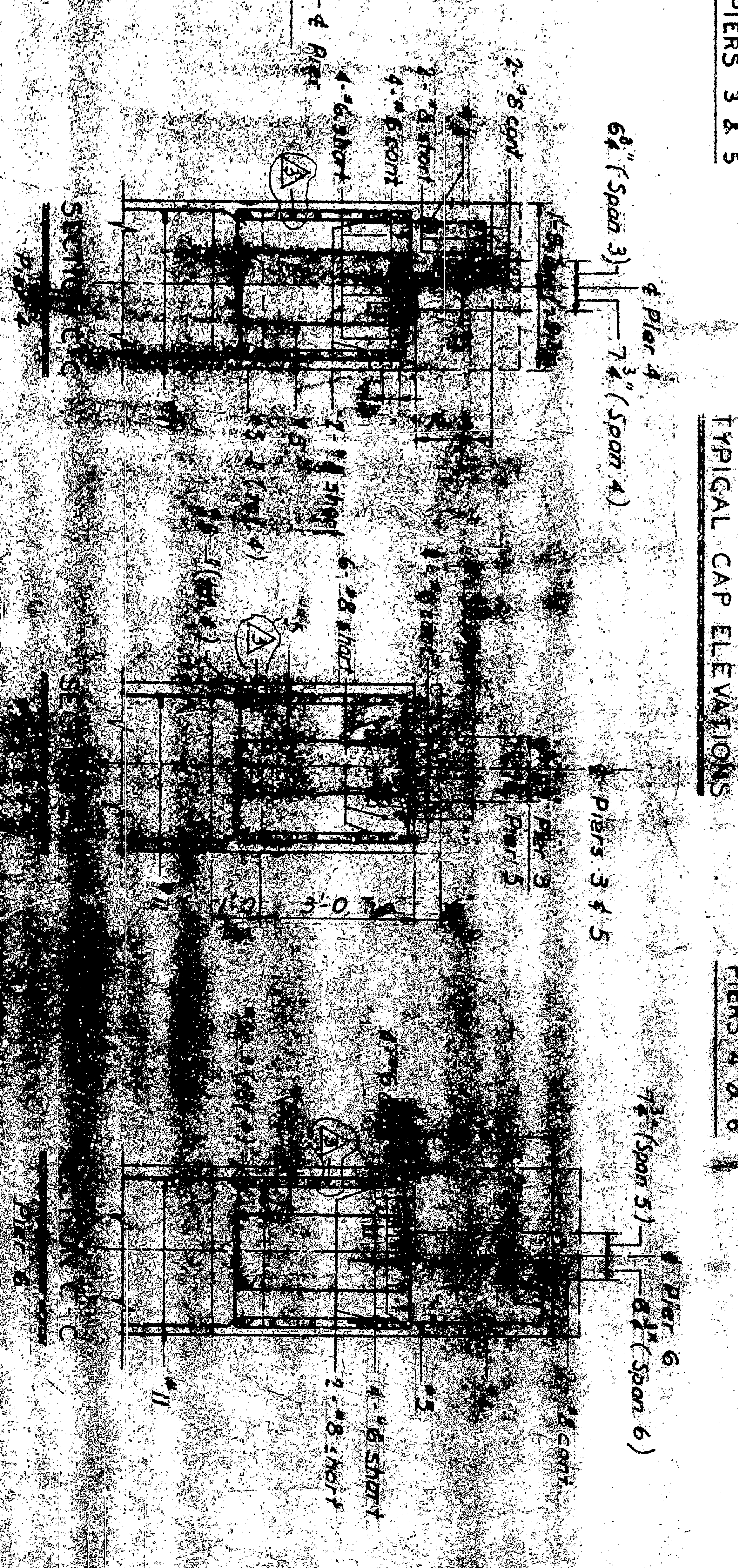


PIERS 3 & 5



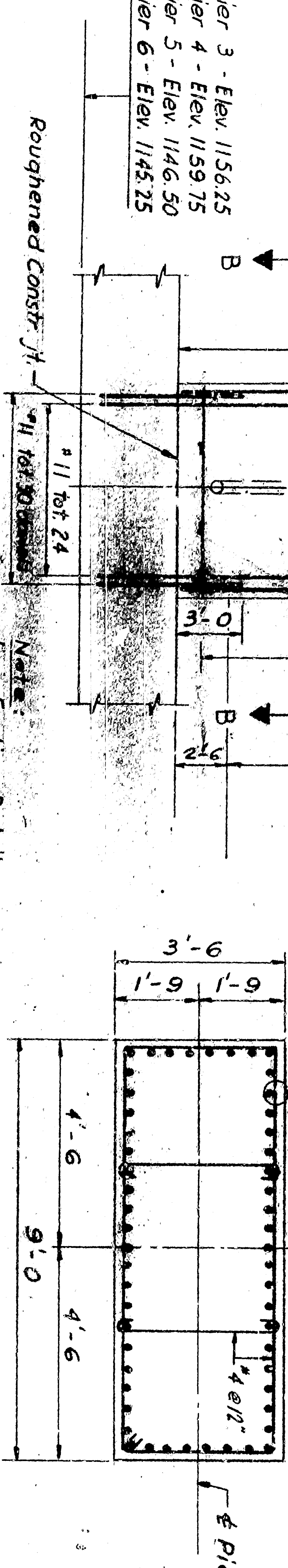
PIERS 4 & 6

Pier 4 - Elev. 1188.53
 Pier 6 - Elev. 1188.66
 Pier 3 - Elev. 1188.86
 Pier 4 - Elev. 1187.03
 Pier 5 - Elev. 1186.54
 Pier 6 - Elev. 1185.92



Pier 3 - Elev. 1156.25
 Pier 4 - Elev. 1159.75
 Pier 5 - Elev. 1146.50
 Pier 6 - Elev. 1145.25

ELEVATION
1/2" = 1'-0"



DESIGNED BY: W. Lipsett
 DRAWN BY: R.D. Lee
 CHECKED BY: H.B. Ford
 APPROVED BY: S.A. Lewis

AS BUILT
 COLTON CUT-OFF
 SOUTHERN PACIFIC COMPANY
 PACIFIC LINES
 CITY OF SAN BERNARDINO
 ARROW ROUTE - RIALTO AVE UNDERPASS
 BRIDGE M. P. 4500
 PIERS 3, 4, 5 AND 6
 SHEET NO. AP-7
 SCALE 3/4" = 1'-0" & 4x notes
 SAN FRANCISCO, CALIFORNIA
 DATE: December 1965

Concrete for footings & shafts
 Piers 3 & 4 - 3000 psi
 Piers 5 & 6 - 4000 psi